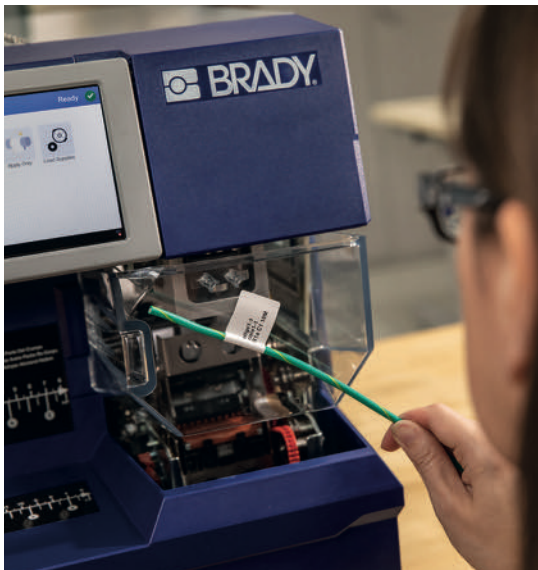




## Automated cable identification

Increase production output

# Automate your identification



If you're still using old technology, the time to get work done seems to disappear. Old processes slow you down, rework creates bottlenecks and errors can bring things to a full stop. Help keep things running smoothly by automating your identification.

Brady offers a family of print-and-apply machines that take the manual labelling process out of your hands so you can move through your work more efficiently and with less rework. With these modern automated machines, you can:

- **Increase productivity** - cut labelling time in half to keep your output numbers high
- **Reduce errors** - get sustainable, consistent identification without the rework
- **Make changes fast** - intuitive full-colour touchscreen and user interface make changing settings easy

## Choose your solution

### Wraptror A6500 Wrap Printer Applicator

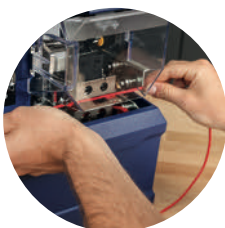
- Print and apply self-laminating labels in five seconds
- Automate time-consuming labelling tasks
- Identify wires from 1.524 mm to 15.24 mm diameter

### Wraptror A6200 Wrap Printer Applicator

- Speed up production in cellular manufacturing
- Easy to transport, set up and operate
- Compact design fits well at workstations

### BradyPrinter A5500 Flag Printer Applicator

- Print and apply flags in five seconds
- Boost productivity with automated labelling
- Apply flag labels free of wrinkles, skew and edge mismatch



**AUTOMATED PRINT  
AND APPLY**



**SPECIALISED HIGH  
QUALITY IDENTIFICATION**



**SOFTWARE**



**SUPPORT AND  
SERVICES**

# Automated cable identification

## Wrap-around labels

For cellular manufacturing and process-driven assembly, workstation flexibility is key to improving workflows. Here's your opportunity to finally get what you need. Designed to increase efficiency, the **Wraptor A6200 Wrap Printer Applicator**:

- fits into tight spaces
- can be moved easily
- prints and wraps wires in 7 seconds

This makes the Wraptor A6200 a high-value, labour-saving solution that's automated - and affordable.



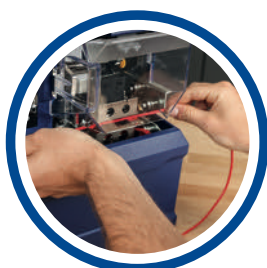
Product Specifications on page 7

Article No.	Description
151628	BradyPrinter Wraptor™ A6200 Wrap Printer Applicator and Rewinder Kit WIFI - EMEA
151627	BradyPrinter Wraptor™ A6200 Wrap Printer Applicator and Rewinder Kit WIFI - NA
151626	Rewinder for BradyPrinter Wraptor™ A6200 Wrap Printer Applicator
151625	BradyPrinter Wraptor™ A6200 Wrap Printer Applicator - EMEA
151624	BradyPrinter Wraptor™ A6200 Wrap Printer Applicator WIFI - EMEA
151623	BradyPrinter Wraptor™ A6200 Wrap Printer Applicator - NA
151622	BradyPrinter Wraptor™ A6200 Wrap Printer Applicator WIFI - NA



## Wraptor A6200 Rewinder

Keep your workspace tidy with the Wraptor A6200 Rewinder. It captures used liner and neatly stores it with a space-saving design. Rewinds used material liner, keeping work area free of debris. Seamlessly couples with the Wraptor A6200 Wrap Printer Applicator.



**AUTOMATED PRINT AND APPLY**



**SPECIALISED HIGH QUALITY IDENTIFICATION**



**SOFTWARE**



**SUPPORT AND SERVICES**

# Automated cable identification

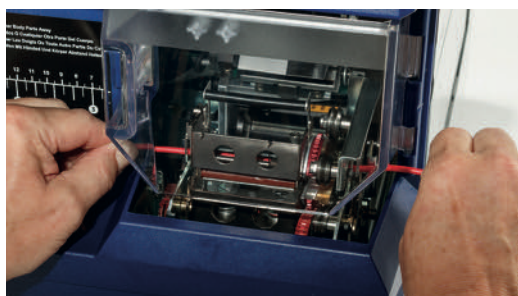


## Wrap-around labels

The **Wraptor A6500 Wrap Printer Applicator** can significantly increase production output by identifying cables with wrap-around labels in 5 seconds. It automatically prints and applies the label on a wide range of insertable cables, saving up to 10 seconds per identified cable.

The Wraptor A6500 Wrap Printer Applicator:


- can greatly increase production output by printing and applying wrap-around cable labels in 5 seconds
- is easy to operate because it can identify a wide range of cables between 1.52 mm and 15.24 mm diameter via a modern user interface with full colour touch screen
- is easy to implement in a variety of production environments thanks to USB ports and ethernet connectivity
- can be used with Brady Workstation apps to design, print and apply a wide range of labels
- allows saving and processing commonly used labels
- can be integrated with Schleuniger Cut & Strip Machines



**i** Product Specifications on page 7

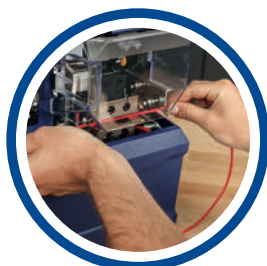
Article No.	Description
149242	Wraptor A6500 Wire ID Printer Applicator - US
149244	Wraptor A6500 Wire ID Printer Applicator - EU/UK

**i**



Calculate what you could save by applying labels with the Wraptor A6500!

**Click or scan the QR-code**



**AUTOMATED PRINT AND APPLY**



**SPECIALISED HIGH QUALITY IDENTIFICATION**



**SOFTWARE**



**SUPPORT AND SERVICES**

# Automated cable identification

## Flag labels

The **BradyPrinter A5500 Flag Printer Applicator**:

- can help save money by eliminating the need to print labels in advance and the time needed to apply them by hand
- can increase production output by sustainably printing and applying flag labels in 5 seconds
- can identify a wide range of cables via a modern user interface with full colour touch screen
- is easy to implement in production environments with USB ports and ethernet connectivity

Experienced operators can print and manually apply a flag label on a cable in 15 seconds. With the BradyPrinter A5500 Flag Printer Applicator they can significantly increase production output by flagging cables in 5 seconds.

## Increase production output and save money

The BradyPrinter A5500 helps increase production output and enhance identification quality by automatically printing and applying flag labels.

It can save quite a lot of money by identifying cables in 5 seconds and by eliminating the need to print labels in advance and the time needed to apply them by hand. The BradyPrinter A5500 enables 300 dpi prints for barcodes, logos and diagrams, and applies reliable cable flags that can communicate a lot of information.

## A wide range of cables

The BradyPrinter A5500 is very flexible and, without any adjustment, can identify cables with 1.52 mm up to 15.24 mm in diameter and apply labels with widths up to 50.8 mm and lengths between 19.05 mm and 76.20 mm. Its full colour touch screen and modern user interface further enhance the printer's flexibility and ease of use.

## Easy to implement

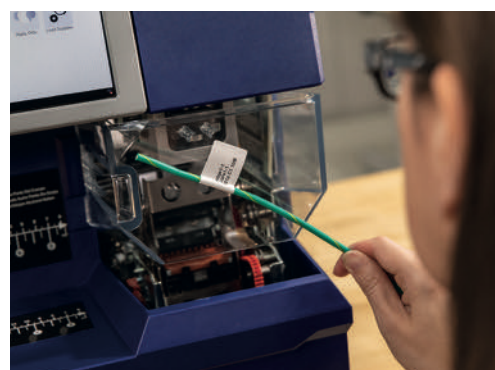
USB-ports and ethernet connectivity make the BradyPrinter A5500 practical to implement in a variety of production environments.

Coupled with Brady Workstation apps for easy flag label design, barcoding and serialisation, the BradyPrinter A5500 becomes a highly practical process efficiency increaser.



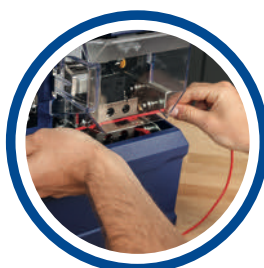
Product Specifications on page 8

Article No.	Description
151187	BradyPrinter A5500 Flag Printer Applicator - EMEA
151186	BradyPrinter A5500 Flag Printer Applicator WIFI - EMEA
151185	BradyPrinter A5500 Flag Printer Applicator - US
151184	BradyPrinter A5500 Flag Printer Applicator WIFI - US



Calculate what you could save by applying labels with the BradyPrinter A5500!

**Click or scan the QR-code**



**AUTOMATED PRINT AND APPLY**



**SPECIALISED HIGH QUALITY IDENTIFICATION**



**SOFTWARE**



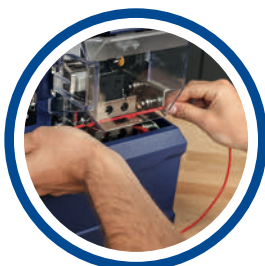
**SUPPORT AND SERVICES**

# Wrap printer applicators

## Wraptor A6200 Wrap Printer Applicator/ Wraptor A6500 Wrap Printer Applicator Specifications



Printer	Wraptor A6200 Wrap Printer Applicator	Wraptor A6500 Wrap Printer Applicator
<b>Applications</b>	Data and telecommunications labelling, Electrical labelling, Wire and cable labelling	Data and telecommunications labelling, Electrical labelling, Wire and cable labelling
<b>Includes</b>	Printer Applicator (A6200), Brady Workstation Product and Wire ID Software Suite (Digital Download Leaflet), Printer Ribbon 50 mm x 45.7 m (A62-R4300), Roll of Vinyl 25.40 mm x 31.75 mm Clear/White Labels (A62-3-427), USB Cable, Quick Start Guide, Power Cord and AC Adapter	Wraptor™ A6500 Wire ID Printer Applicator, including Brady Workstation Product and Wire ID label design and printing software, Wraptor™ print driver, USB cable, power cord, roll of WRAP-4-427 and roll of R-4302 ribbon
<b>Weight (kg)</b>	4.08	38.50
<b>Width x Height x Depth (mm)</b>	222.86 x 211.38 x 297.56	368.30 x 450.90 x 571.50
<b>Internal Memory</b>	32 GB - Memory expandable through USB	32 GB - Memory expandable through USB
<b>Display</b>	Colour LCD Touchscreen	Colour Touchscreen
<b>Colour Capability</b>	Monocolour	Monocolour
<b>Print Resolution (dpi)</b>	300	300
<b>Print Speed (mm/sec)</b>	38.10	76.00
<b>Print Technology</b>	Thermal Transfer	Thermal Transfer
<b>Warranty</b>	1 year	1 year
<b>Materials supported</b>		
<b>Materials Supported</b>	B-427, B-499, B-417	B-427, B-499, B-472, B-417
<b>Min. Label Width (mm)</b>	12.70	12.70
<b>Max. Label Width (mm)</b>	25.40	50.80
<b>Max. Print Width (mm)</b>	25.40	50.80
<b>Min. Wire Diameter (mm)</b>	1.19	1.52
<b>Max. Wire Diameter (mm)</b>	6.35	15.24
<b>Recommended Usage per Day</b>	3000	7000
<b>Hours of Operation</b>	8 hours/5 days	24 hours/7 days
<b>Fonts/graphics/symbologies</b>		
<b>Bar Code Type</b>	2D and 1D (Linear)	2D and 1D (Linear)
<b>Software &amp; connectivity</b>		
<b>Connectivity Options</b>	Ethernet, USB, Wi-Fi	Ethernet, USB, Wi-Fi
<b>Software Compatibility</b>	Brady Workstation, Windows based driver for 3rd party software use	Brady Workstation, LabelMark
<b>Stand-alone Printing (Detached from PC)</b>	Stand-alone & Peripheral	Stand-alone & Peripheral
<b>Power supply</b>		
<b>Battery Type</b>	Lithium-manganese Battery	Lithium-manganese Battery
<b>Power Requirements</b>	90-264V, 47-63 Hz	90-264V, 47-63 Hz



**AUTOMATED PRINT  
AND APPLY**



**SPECIALISED HIGH  
QUALITY IDENTIFICATION**



**SOFTWARE**



**SUPPORT AND  
SERVICES**

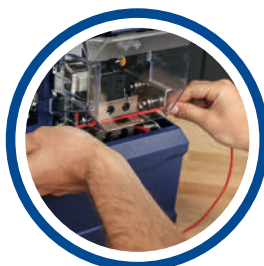
# Flag printer applicators



## BradyPrinter A5500 Flag Label Printer Applicator Specifications

Printer	
Applications	Cable & wire identification
Includes	BradyPrinter A5500 Flag Printer Applicator, Brady Workstation Product and Wire ID Suite, A5500 print driver, USB Cable, power cord, roll of A55-4-483, roll of SSR6002 ribbon
Weight (kg)	34
Size W x H x D (mm)	383.54 x 452.12 x 604.52
Internal Memory	32 GB - Memory expandable through USB
Display	Colour Touchscreen
Colour Capability	Monocolour
Print Resolution (dpi)	300
Print Speed (mm/sec)	76.20
Print Technology	Thermal Transfer
Warranty	1 year
Materials supported	
Materials Supported	B-483
Min. Label Width (mm)	25.40
Max. Label Width (mm)	50.80
Max. Print Width (mm)	50.80
Max. Print Length (mm)	101.60
Min. Wire Diameter (mm)	1.524
Max. Wire Diameter (mm)	15.24
Recommended Usage per Day	7000
Hours of Operation	24 hours/7 days
Fonts/graphics/symbologies	
Bar Code Type	2D and 1D (Linear)
Built-in Fonts	Arial Arial 65 Courier New Tahoma Times New Roman

Software & connectivity	
Connectivity Options	Ethernet USB WiFi
Software Compatibility	Brady Workstation
Stand-alone Printing (Detached from PC)	Stand-alone & Peripheral
Power supply	
Battery Type	Lithium-Manganese Battery
Power Requirements	100-240 V @ 50-60 Hz
Compliance	
Approval/Compliance	CE 2014/35/EU LVD, 2014/30/EU EMCD, 2011/65/EU, 2015/863/EU; UL 60950-1, 2nd Edition; EN \ IEC 60950-1:2006 + A11:2009 + A1:2010 + A12:2011+ A2:2013; WEEE; RoHS



**AUTOMATED PRINT AND APPLY**



**SPECIALISED HIGH QUALITY IDENTIFICATION**

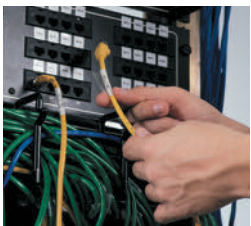
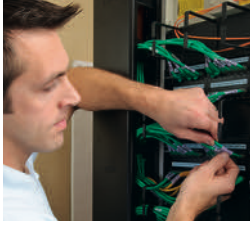


**SOFTWARE**



**SUPPORT AND SERVICES**

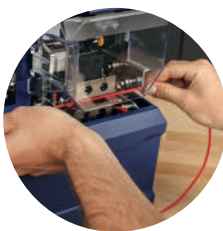
# Durable auto-apply cable labels



## Auto-apply cable wraps

Brady's wrap around cable labels offer excellent print quality, high resistances versus extreme temperatures, chemicals and fuels and a good fading and abrasion resistance.

- Self-laminating vinyl cable labels (B-427) have a durable translucent vinyl film with an acrylic pressure sensitive adhesive. The labels are equipped with a white (or other colour options) thermal transfer printable zone and a transparent overlaminating area, which wraps around the label to protect the text from fading and abrasion.
- Polyamide coated nylon cloth (B-499) suitable for wiremarking and general labelling applications. This material meets the halogen free requirements as per the DIN norm.
- Flame retardant cable wrap labels (B-472) are self-extinguishing and prevent flames from propagating. Their special topcoat enables crystal clear THT print quality and excellent chemical resistance. These labels are ideal for high temperature applications.



**AUTOMATED PRINT  
AND APPLY**



**SPECIALISED HIGH  
QUALITY IDENTIFICATION**



**SOFTWARE**



**SUPPORT AND  
SERVICES**

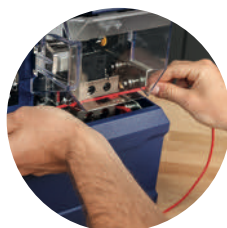
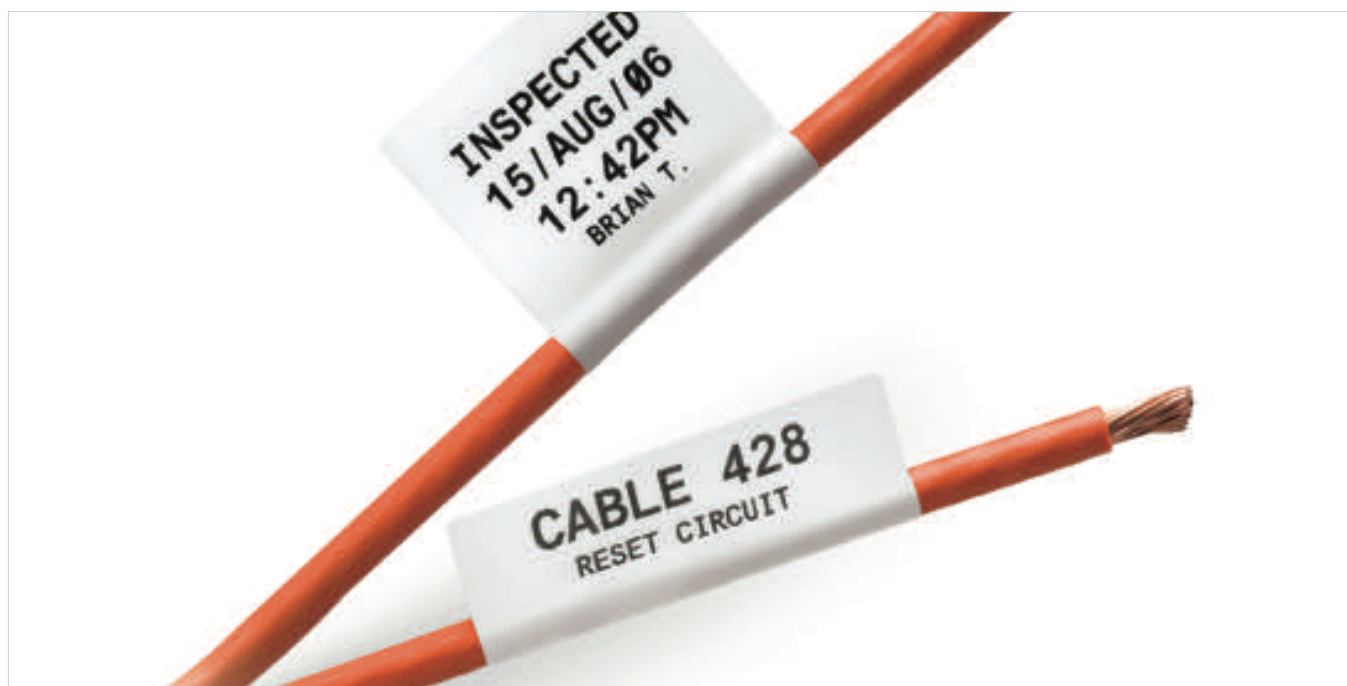
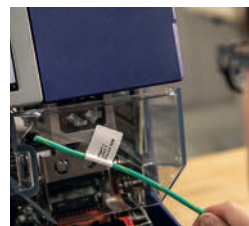


# Durable auto-apply cable labels

## Auto-apply cable flags

Cable Flag Labels are an excellent identification solution when more information or a barcode is needed to properly identify a cable or wire.

The B-483 polyester cable label with rubber based adhesive and glossy finish is designed for high adhesion and is available in white.



**AUTOMATED PRINT AND APPLY**



**SPECIALISED HIGH QUALITY IDENTIFICATION**



**SOFTWARE**



**SUPPORT AND SERVICES**

# Printer materials

The following part numbers are specially designed for use with the **Wraptor A6200 Wrap Printer Applicator** printer only.



## Self-Laminating Vinyl Wire and Cable Labels

Self-Laminating Vinyl (B-427) is an excellent material for wire and cable identification. This material has good clarity, conformability and is self-extinguishing. Provided in a self-laminated format with a white printable zone and translucent overlaminating area to protect text. Durable, permanent acrylic adhesive has outstanding water and oil resistance.

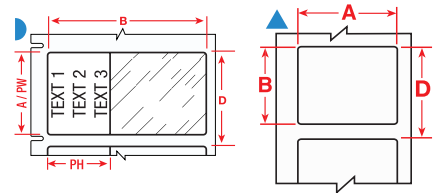


Diagram	Art. No.	Order Reference	Colour	Label Width A (mm)	Label Height B (mm)	Printable Area Width PW (mm)	Printable Area Height PH (mm)	Vertical Repeat D (mm)	Min. Wire Diameter (mm)	Max. Wire Diameter (mm)	Labels per Roll	Printer Ribbon Series
<b>B-427: Self-laminating Vinyl</b>												
▶	151007	A62-1-427	White, Transparent	12.70	19.05	12.70	9.53	22.23	1.52	3.05	850	R4300
▶	151008	A62-14-427	White, Transparent	12.70	31.75	12.70	12.70	34.93	3.05	6.10	500	R4300
▶	151009	A62-15-427	White, Transparent	25.40	19.05	25.40	9.53	22.23	1.52	3.05	850	R4300
▶	151010	A62-3-427	White, Transparent	25.40	31.75	25.40	12.70	34.93	3.05	6.10	500	R4300
<b>B-499: Nylon Cloth</b>												
▲	151011	A62-7-499	White	12.70	19.05	–	–	22.23	1.52	6.10	600	R4300
▲	151012	A62-16-499	White	12.70	25.40	–	–	28.58	3.30	6.35	450	R4300
▲	151013	A62-15-499	White	25.40	19.05	–	–	22.23	1.52	6.10	600	R4300
▲	151014	A62-13-499	White	25.40	25.40	–	–	28.58	3.30	6.35	450	R4300
<b>B-417: Self-laminating Vinyl</b>												
▶	152200	A62-1-417	White, Transparent	12.70	19.05	12.70	9.53	22.23	1.52	3.05	750	R4300
▶	152201	A62-14-417	White, Transparent	12.70	31.75	12.70	12.70	34.93	3.05	6.10	450	R4300
▶	152202	A62-15-417	White, Transparent	25.40	19.05	25.40	9.53	22.23	1.52	3.05	750	R4300
▶	152203	A62-3-417	White, Transparent	25.40	31.75	25.40	12.70	34.93	3.05	6.10	450	R4300

## Ribbon

Article No.	Order Reference	Width (mm)	Description
151629	A62-R4300	50.00	A6200 R4300 Series Printer Ribbon



# Printer materials



The following part numbers beginning with “WRAP” are specially designed for use with the **Wraprotor A6500 Wrap Printer Applicator** only.

## Self-laminating Vinyl

Brady’s most popular wire and cable marker. Self-laminating vinyl features white printable area with a clear “tail” that wraps around marker. Tail serves as overlamine to protect the print. Superior resistance to abrasion, solvents, water, oil and dirt.

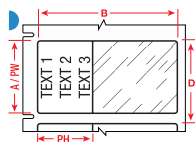


Diagram	Article No.	Order Reference	Colour	Label Width A (mm)	Label Height B (mm)	Printable Area Width PW (mm)	Printable Area Height PH (mm)	Vertical Repeat D (mm)	Min. Wire Diameter (mm)	Max. Wire Diameter (mm)	Labels per Roll	Printer Ribbon Series
B-427: Self-laminating Vinyl												
▶	801612	WRAP-1-427	White/Transparent	12.70	19.05	12.70	9.53	22.20	2.00	3.00	6800	R4300
▶	805029	WRAP-11-427	White/Transparent	12.70	38.10	12.70	12.70	41.30	4.00	8.10	3600	R4300
▶	801613	WRAP-2-427	White/Transparent	25.40	25.40	25.40	9.53	28.60	2.70	5.10	5300	R4300
▶	801614	WRAP-3-427	White/Transparent	25.40	31.75	25.40	12.70	34.90	3.40	6.10	4300	R4300
▶	801615	WRAP-4-427	White/Transparent	25.40	38.10	25.40	12.70	41.30	4.06	8.10	3600	R4300
▶	801616	WRAP-10-427	White/Transparent	25.40	57.15	25.40	19.05	60.30	6.10	12.10	2500	R4300
▶	801617	WRAP-5-427	White/Transparent	38.10	63.50	38.10	19.05	66.70	6.70	14.20	2200	R4300
▶	805030	WRAP-12-427	White/Transparent	50.80	38.10	50.80	12.70	41.30	4.06	8.10	3600	R4300
▶	801618	WRAP-6-427	White/Transparent	50.80	76.20	50.80	25.40	79.37	8.10	16.20	1900	R4300

## Nylon Cloth

Nylon cloth with permanent adhesive allows labelling in environments with heat, cold, oil and dirt. Ideal for wire and cable marking, electronic component marking, laboratory vial identification, and general labelling.

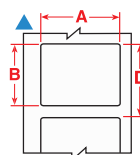


Diagram	Article No.	Order Reference	Colour	Label Width A (mm)	Label Height B (mm)	Min. Wire Diameter (mm)	Max. Wire Diameter (mm)	Vertical Repeat D (mm)	Labels per Roll	Printer Ribbon Series
B-499: Nylon Cloth										
▲	801619	WRAP-7-499	White	12.70	19.05	1.52	5.06	22.22	4500	R4300
▲	801620	WRAP-8-499	White	25.40	38.10	4.04	11.13	41.27	2800	R4300
▲	801621	WRAP-9-499	White	50.80	50.80	5.39	15.16	53.97	2100	R4300
▲	805031	WRAP-13-499	White	25.40	25.40	2.69	7.09	28.57	4100	R4300

## Polyimide

B-472 is specifically designed to self-extinguish and prevent flames from propagating. This material is ideal for wire and cable identification in extreme environments, particularly in the aerospace, defense and mass transit industries.

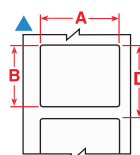
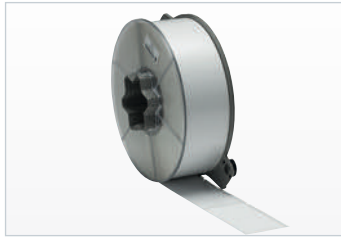


Diagram	Article No.	Order Reference	Colour	Label Width A (mm)	Label Height B (mm)	Min. Wire Diameter (mm)	Max. Wire Diameter (mm)	Vertical Repeat D (mm)	Labels per Roll	Printer Ribbon Series
B-472: Polyimide										
▲	129971	WRAP-1-472	White	12.70	19.05	3.30	8.13	22.22	6800	R2000, R4300, R6200
▲	129972	WRAP-6-472	White	50.80	76.20	3.30	15.14	79.37	1900	R2000, R4300, R6200

# Printer materials

The following part numbers are specially designed for use with the **BradyPrinter A5500 Flag Label Printer Applicator**.



## Paper/Polypropylene/Polyvinylfluoride/Polyester Thermal Transfer Printable Labels

Regardless whether your cable and wire flag labelling needs to be permanent, of the highest quality, for general identification or for temporary work-in-progress labelling, with our extended label material options we have a solution.

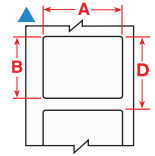


Diagram	Article No.	Order Reference	Colour	Label Width A (mm)	Label Height B (mm)	Min. Wire Diameter (mm)	Max. Wire Diameter (mm)	Vertical Repeat D (mm)	Labels per Roll	Printer Ribbon Series
<b>B-424: Paper</b>										
▲	151825	A55-1-424	White	25.40	38.10	1.52	4.83	41.28	3800	R4300, R6100
▲	151826	A55-2-424	White	38.10	38.10	1.52	4.83	41.28	3800	R4300, R6100
▲	151827	A55-3-424	White	50.80	38.10	1.52	4.83	41.28	3800	R4300, R6100
▲	151828	A55-4-424	White	25.40	63.50	3.30	8.13	66.68	2400	R4300, R6100
▲	151829	A55-5-424	White	38.10	63.50	3.30	4.83	66.68	2400	R4300, R6100
▲	151830	A55-6-424	White	50.80	63.50	3.30	9.65	66.68	2400	R4300, R6100
▲	151831	A55-7-424	White	50.80	76.20	8.13	15.24	79.38	2000	R4300, R6100
▲	151832	A55-11-424	White	25.40	50.80	1.52	8.13	53.98	3000	R4300, R6100
▲	151833	A55-12-424	White	25.40	76.20	8.13	15.24	79.38	2000	R4300, R6100
▲	151834	A55-13-424	White	50.80	50.80	1.52	6.35	53.98	3000	R4300, R6100
<b>B-425: Polypropylene</b>										
▲	151835	A55-1-425	White	25.40	38.10	1.52	4.83	41.28	3300	R4300
▲	151836	A55-2-425	White	38.10	38.10	1.52	0.48	41.28	3300	R4300
▲	151837	A55-3-425	White	50.80	38.10	1.52	4.83	41.28	3300	R4300
▲	151838	A55-4-425	White	25.40	63.50	3.30	9.65	66.68	2000	R4300
▲	151839	A55-5-425	White	38.10	63.50	3.30	8.13	66.68	2000	R4300
▲	151840	A55-6-425	White	50.80	63.50	3.30	8.13	66.68	2000	R4300
▲	151841	A55-7-425	White	50.80	76.20	8.13	12.70	79.38	1700	R4300
▲	151842	A55-11-425	White	25.40	50.80	1.52	6.35	53.98	2500	R4300
▲	151843	A55-12-425	White	25.40	76.20	8.13	15.24	79.38	1700	R4300
▲	151844	A55-13-425	White	50.80	50.80	1.52	8.13	53.98	2500	R4300
<b>B-437: Polyvinylfluoride</b>										
▲	151845	A55-1-437	White	25.40	38.10	1.52	4.83	41.28	3800	R4300
▲	151846	A55-2-437	White	38.10	38.10	1.52	4.83	41.28	3800	R4300
▲	151847	A55-3-437	White	50.80	38.10	1.52	4.83	41.28	3800	R4300
▲	151848	A55-4-437	White	25.40	63.50	3.30	12.70	66.68	2400	R4300
▲	151849	A55-5-437	White	38.10	63.50	3.30	9.65	66.68	2400	R4300
▲	151850	A55-6-437	White	50.80	63.50	3.30	9.65	66.68	2400	R4300
▲	151851	A55-7-437	White	50.80	76.20	8.13	15.24	79.38	2000	R4300
▲	151852	A55-11-437	White	25.40	50.80	1.52	6.35	53.98	3000	R4300
▲	151853	A55-12-437	White	25.40	76.20	8.13	15.24	79.38	2000	R4300
▲	151854	A55-13-437	White	50.80	50.80	1.52	8.13	53.98	3000	R4300
<b>B-483A: Polyester</b>										
▲	150697	A55-1-483	White	25.40	38.10	1.52	4.83	41.28	3600	R6000HF
▲	150698	A55-2-483	White	38.10	38.10	1.52	4.83	41.28	3600	R6000HF
▲	150699	A55-3-483	White	50.80	38.10	1.52	4.83	41.28	3600	R6000HF
▲	150700	A55-4-483	White	25.40	63.50	3.30	12.70	66.68	2200	R6000HF
▲	150701	A55-5-483	White	38.10	63.50	3.30	12.70	66.68	2200	R6000HF
▲	150702	A55-6-483	White	50.80	63.50	3.30	12.70	66.68	2200	R6000HF
▲	150703	A55-7-483	White	50.80	76.20	12.70	15.24	79.38	1900	R6000HF
▲	151865	A55-10-483	White	12.70	38.10	1.52	4.83	41.28	3600	R6000
▲	151866	A55-11-483	White	25.40	50.80	1.52	6.35	53.98	2800	R6000
▲	151867	A55-12-483	White	25.40	76.20	8.13	15.24	79.38	1900	R6000
▲	151868	A55-13-483	White	50.80	50.80	1.52	6.35	53.98	2800	R6000
▲	151869	A55-14-483	White	19.05	38.10	1.52	4.83	41.28	3600	R6000

## Ribbons

Article No.	Order Reference	Width (mm)	Description
150706	SSR4302	60.00	Black 4300 Series Thermal Transfer Printer Ribbon for BradyPrinter A5500
150707	SSR4306	40.00	Black 4300 Series Thermal Transfer Printer Ribbon for BradyPrinter A5500
150709	SSR6002	60.00	Black 6000 Series Halogen Free Thermal Transfer Printer Ribbon for BradyPrinter A5500
150710	SSR6006	40.00	Black 6000 Series Halogen Free Thermal Transfer Printer Ribbon for BradyPrinter A5500
151810	SSR6102	60.00	Black 6100 Series Thermal Transfer Printer Ribbon for BradyPrinter A5500

# Design, print and manage your labelling with software

## Brady Workstation Desktop Software

Design and print labels seamlessly with Brady Workstation software suites. Each includes specialised apps that can be used for a variety of common industry-related tasks. Along with popular time-saving features like auto-formatting and built-in templates, Brady Workstation software features an intuitive interface that integrates easily with the work you do.

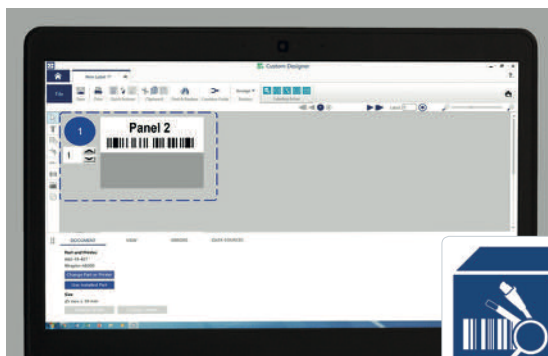


1. Go to [Workstation.BradyID.com](http://Workstation.BradyID.com).



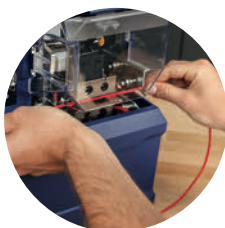
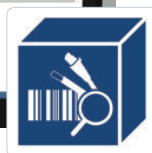
2. Fill the workstation with the apps and suites you want.

For more information on Brady Workstation apps and suites, go to [Workstation.BradyID.com](http://Workstation.BradyID.com).



## Product and Wire Identification Suite (software included)

Get faster, more efficient labelling for wires and cables. Use these apps to create labels with text, graphics and custom formatting. Or, make labels by serialising and importing pre-existing data.



**AUTOMATED PRINT AND APPLY**



**SPECIALISED HIGH QUALITY IDENTIFICATION**

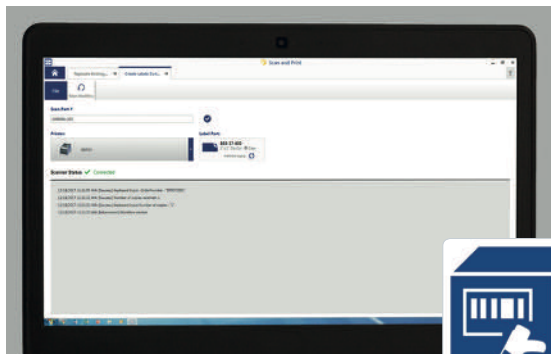


**SOFTWARE**



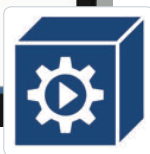
**SUPPORT AND SERVICES**

# Design, print and manage your labelling with software



## Automation Suite

Save time and labour by fully automating your label printing. These apps make it easy to set up templates and import data, to automate your label creation process and to make it error-free.



## Scan and Print Suite

Quickly populate data in label templates with these apps. Just use a barcode scanner, keyboard or custom script. Ideal for labelling off-of-work orders and re-labelling supplied parts for product assembly.



## Easily Connect to Your Printer

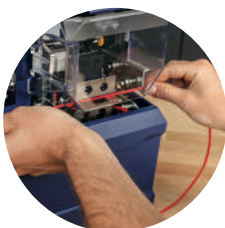
Brady Workstation works seamlessly with a range of Brady printers. Simply connect a Brady printer to an internet connected computer to access and print your Brady Workstation label templates and functionalities.

Brady's high-end label printers also offer bi-directional communication with Brady Workstation and will inform users if they have to switch label materials to print specific label designs.



### Try it today!

Discover more on [www.bradyeurope.com/bradyworkstation](http://www.bradyeurope.com/bradyworkstation)  
Click or scan the QR-code



**AUTOMATED PRINT AND APPLY**



**SPECIALISED HIGH QUALITY IDENTIFICATION**



**SOFTWARE**



**SUPPORT AND SERVICES**

# Support & services

## Service agreements

On top of an included 1 year warranty, Brady offers premium support service agreements. Service agreements are fully customisable to your needs and can include premium support by phone and/or support at your premises.

Available service agreement options:

- preventive maintenance
- fast repairs
- replacement devices
- dedicated in-house contact center
- support in 12 languages
- local presence
- man hours included
- no unexpected costs



## Scanners

High quality scanners are available. With portable scanners, you will be able to scan barcodes printed on cable labels and sleeves to monitor production output and manage inventory.

Available scanner services:

- scanner purchasing
- scanner configuration
- scanner integration



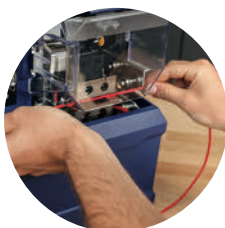
## Integration

Brady also offers advice, support and full collaboration with third parties to help integrate our labelling solutions in your production line.



## In-house laboratory

Brady's in-house laboratories rigorously test our solutions in line with standard testing methods. Our scientists test the performance of complete label constructions including the liner, adhesives, label materials and label top coat to deliver solutions that solve your challenges. Our in-house lab can offer test results on request or test new label requirements when relevant.



**AUTOMATED PRINT  
AND APPLY**



**SPECIALISED HIGH  
QUALITY IDENTIFICATION**



**SOFTWARE**



**SUPPORT AND  
SERVICES**

### Africa

Randburg, South Africa  
Tel.: +27 11 704 3295  
Email: africa@bradycorp.com

### Benelux

Zele, Belgium  
Tel.: +32 (0) 52 45 78 11  
Email: benelux@bradycorp.com

### Central & Eastern Europe

Bratislava, Slovakia  
Tel.: +421 2 3300 4800  
Email: central\_europe@bradycorp.com

### Denmark

Odense  
Tel.: +45 66 14 44 00  
Email: denmark@bradycorp.com

### France

Roncq  
Tel.: +33 (0) 3 20 76 94 48  
Email: france@bradycorp.com

### Germany, Austria & Switzerland

Egelsbach, Germany  
Tel.: +49 (0) 6103 7598 660  
Email: germany@bradycorp.com

### Hungary

Budaörs  
Tel.: +36 23 500 275  
Email: central\_europe@bradycorp.com

### Italy

Gorgonzola  
Tel.: +39 02 26 00 00 22  
Email: italy@bradycorp.com

### Middle East FZE

Dubai, UAE  
Tel.: +971 4881 2524  
Email: me@bradycorp.com

### Norway

Kjeller  
Tel.: +47 70 13 40 00  
Email: norway@bradycorp.com

### Russia

Moscow  
Tel.: +7 495 269 47 87  
Email: central\_europe@bradycorp.com

### Spain & Portugal

Madrid, Spain  
Tel.: +34 900 902 993  
Email: spain@bradycorp.com,  
portugal@bradycorp.com

### Sweden, Finland, Baltic states

Kista, Sweden  
Tel.: +46 (0) 8 590 057 30  
Email: sweden@bradyeurope.com

### Turkey

Istanbul  
Tel.: +90 212 264 02 20 / 264 02 21  
Email: turkey@bradycorp.com

### UK & Ireland

Banbury, UK  
Tel.: +44 (0) 1295 228 288  
Email: uk@bradycorp.com

# Our mission is to identify and protect people, products and places



To help minimise our impact on the environment, Brady limits its number of reprints.

Updated versions are always available for download on [www.bradyeurope.com](http://www.bradyeurope.com).

 Search for: EUR-M-953-EN



Y4611898

Your distributor

**Identipro Limited**  
Deem House, Audby Lane, Wetherby  
LS22 7FD  
Tel: 01937 845 792  
[www.identipro.co.uk](http://www.identipro.co.uk)    [sales@identipro.co.uk](mailto:sales@identipro.co.uk)

14/06/2021